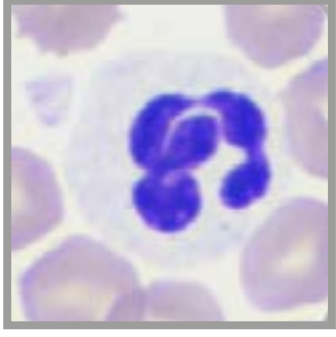


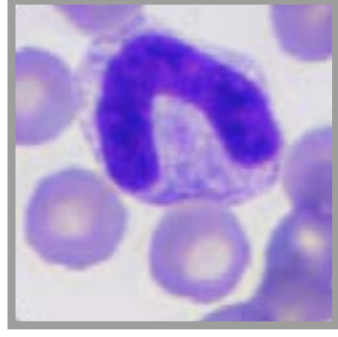
HÄMATOLOGIE

→ Hund

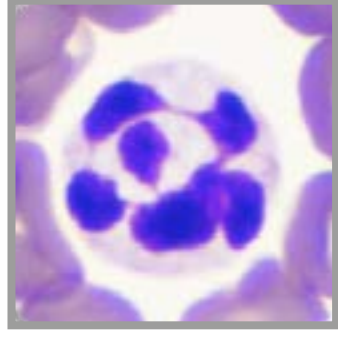
→ Katze



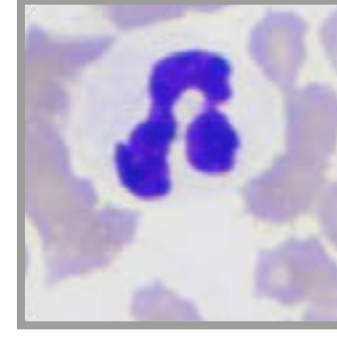
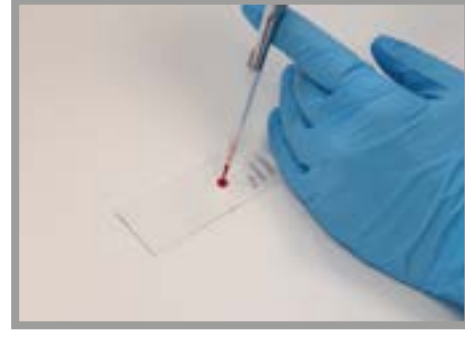
Segmentkerniger neutrophiler Granulozyt



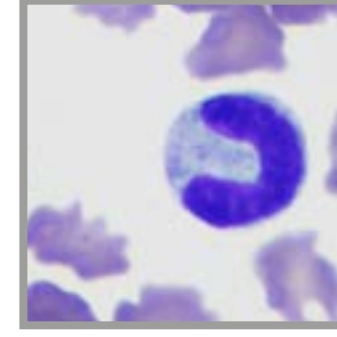
Stabkerniger neutrophiler Granulozyt



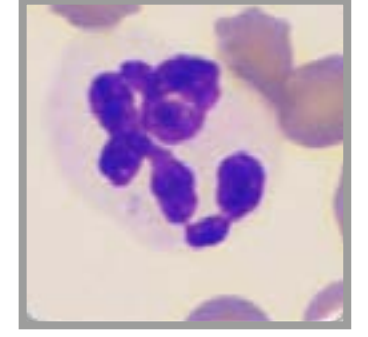
Hypersegmentierter neutrophiler Granulozyt



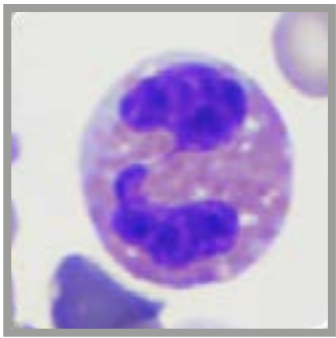
Segmentkerniger neutrophiler Granulozyt



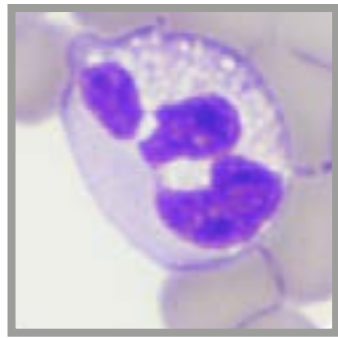
Stabkerniger neutrophiler Granulozyt



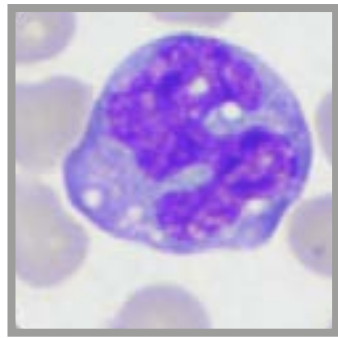
Hypersegmentierter neutrophiler Granulozyt



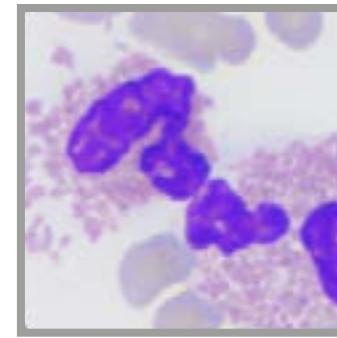
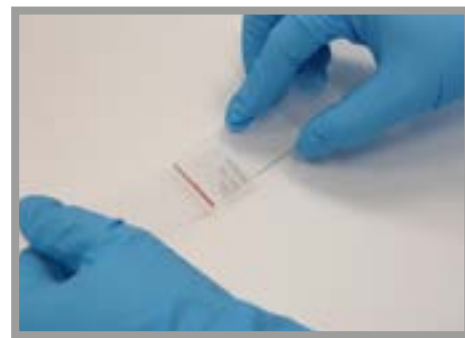
Segmentkerniger eosinophiler Granulozyt



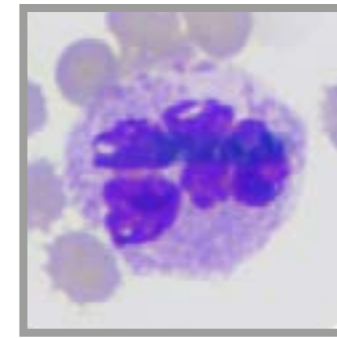
Segmentkerniger eosinophiler Granulozyt beim Windhund



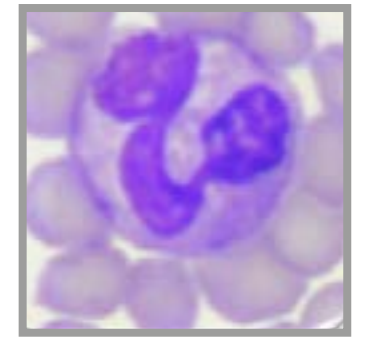
Aktivierter Monozyt



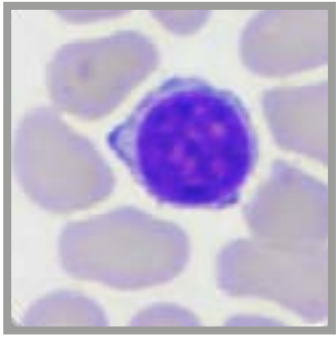
Segmentkernige eosinophile Granulozyten



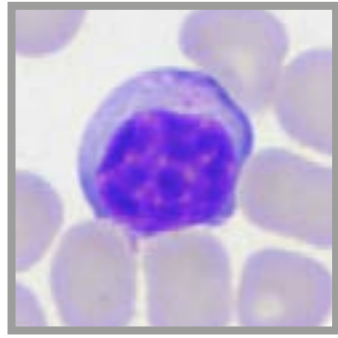
Segmentkerniger basophiler Granulozyt



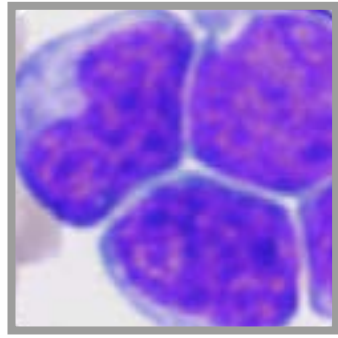
Monozyt



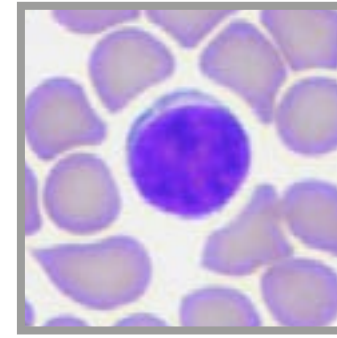
Kleiner, reifkerniger Standard-Lymphozyt



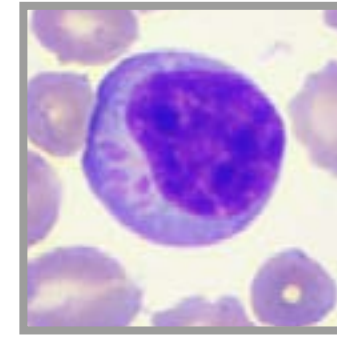
Kleiner, reifkerniger, reaktiver Lymphozyt



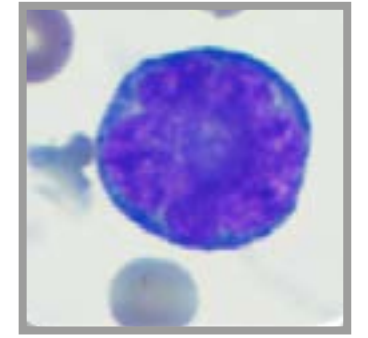
Große, atypisch-neoplastische Lymphozyten



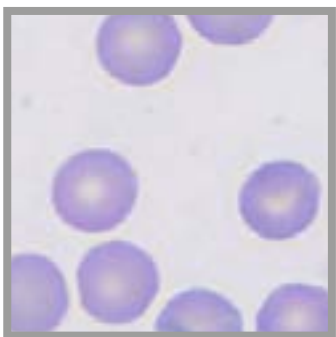
Kleiner, reifkerniger Standard-Lymphozyt



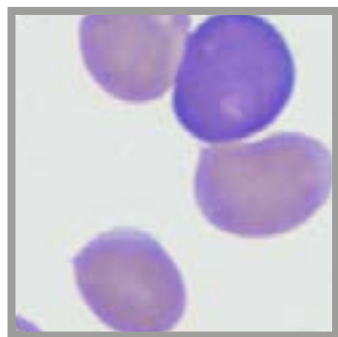
LGL Large granular lymphocyte



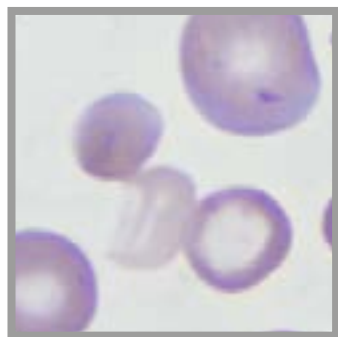
Mittelgroßer, dunkel-basophiler, atypisch-reaktiver Lymphozyt



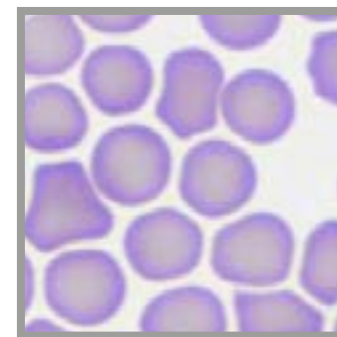
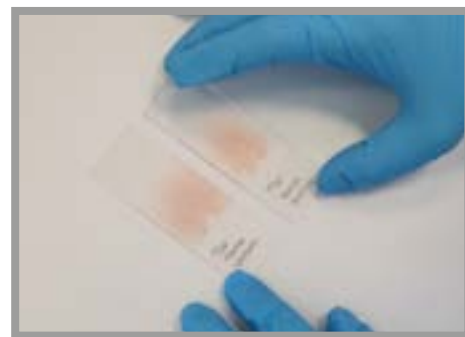
Physiologische Erythrozyten zentrale Aufhellung



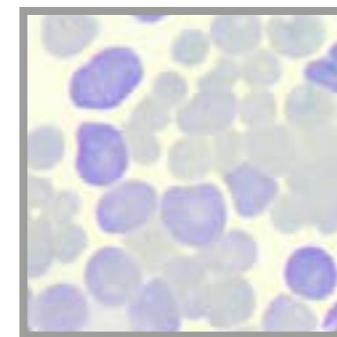
Polychromasie



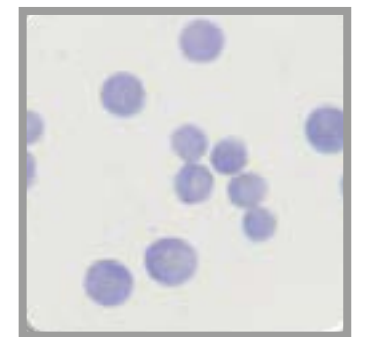
Anisozytose



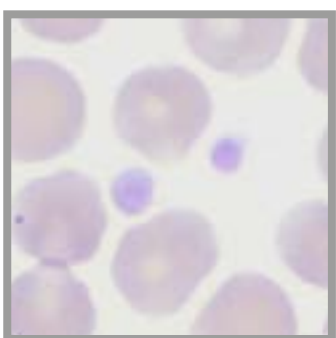
Physiologische Erythrozyten keine zentrale Aufhellung



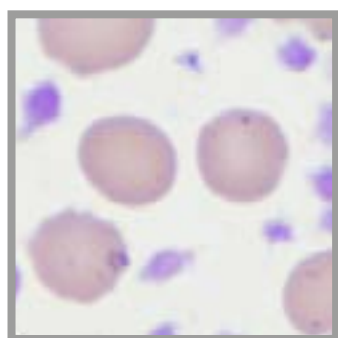
Polychromasie



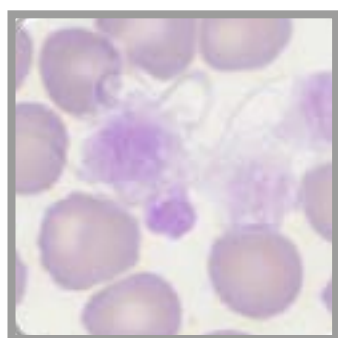
Anisozytose



Physiologische Thrombozyten



Thrombozytose



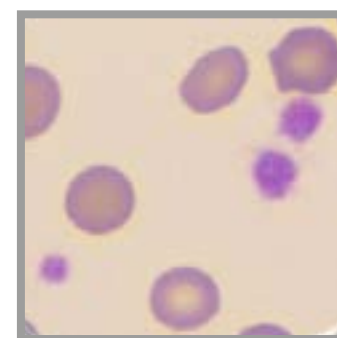
Makrothrombozyten



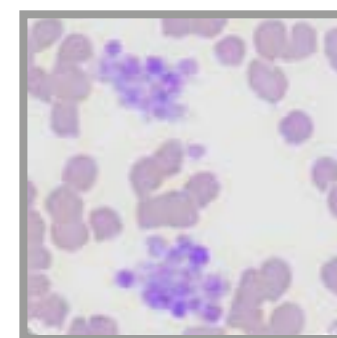
Blutausstrich



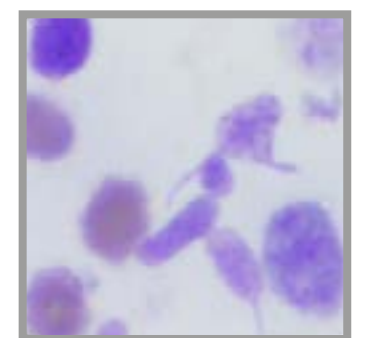
Färben



Physiologische Thrombozyten



Thrombozyten-aggregate



Atypische Thrombozyten

Stand: Juni 2024, Bildquelle: Laboklin

D Steubenstr. 4
97688 Bad Kissingen
Deutschland
Telefon +49 971 7 20 20
Fax +49 971 6 85 46
E-Mail info@laboklin.com
Internet www.laboklin.com

A Paul-Hahn-Str. 3 / D / 1
4020 Linz
Österreich
Telefon +43 732 717 24 20
Fax +43 732 717 322
E-Mail labor.linz@laboklin.com
Internet www.laboklin.com

CH Max Kämpf-Platz 1
Postfach, 4002 Basel
Schweiz
Telefon +41 61 319 60 60
E-Mail labor.basel@laboklin.ch
Internet www.laboklin.com