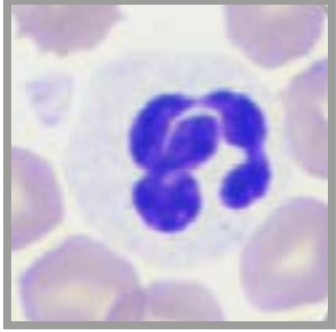


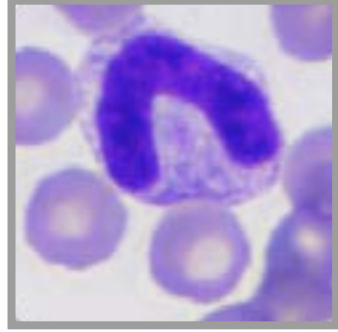
# HÄMATOLOGIE

## → Hund

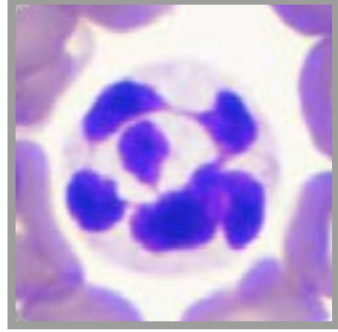
## → Katze



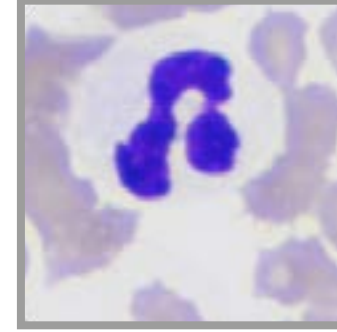
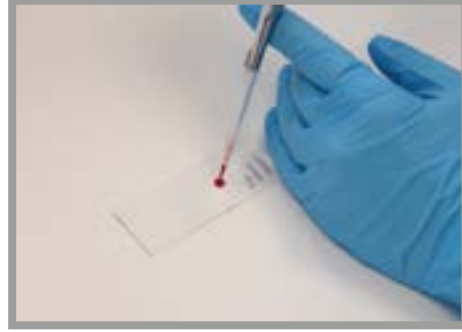
Segmentkerniger neutrophiler Granulozyt



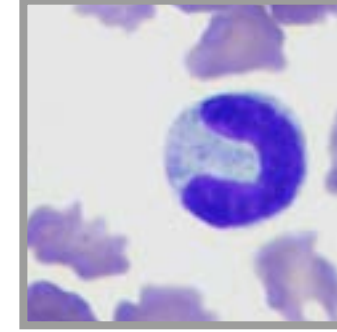
Stabkerniger neutrophiler Granulozyt



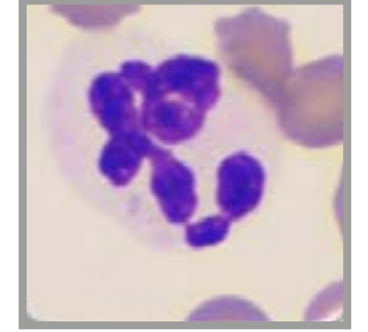
Hypersegmentierter neutrophiler Granulozyt



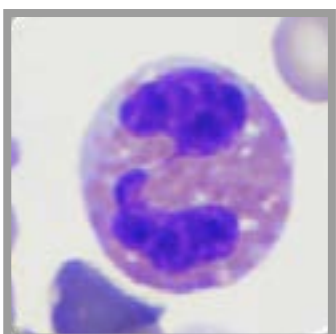
Segmentkerniger neutrophiler Granulozyt



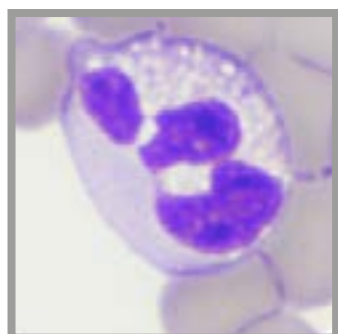
Stabkerniger neutrophiler Granulozyt



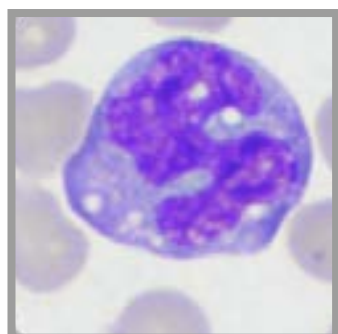
Hypersegmentierter neutrophiler Granulozyt



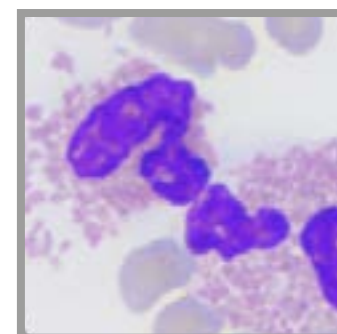
Segmentkerniger eosinophiler Granulozyt



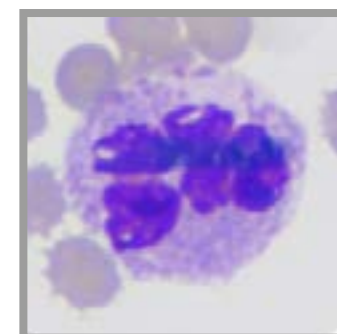
Segmentkerniger eosinophiler Granulozyt beim Weimaraner



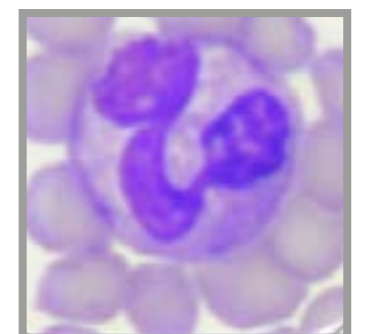
Aktivierter Monozyt



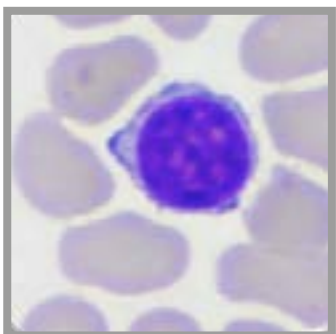
Segmentkernige eosinophile Granulozyten



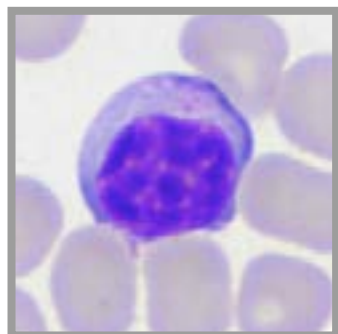
Segmentkerniger basophiler Granulozyt



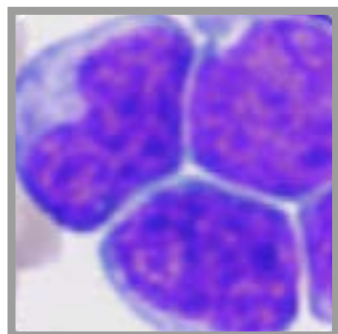
Monozyt



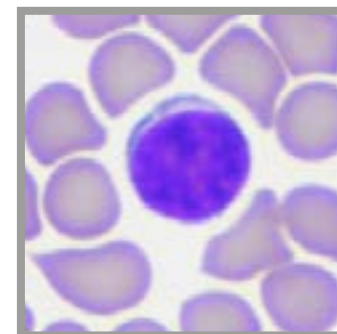
Kleiner, reifkerniger Standard-Lymphozyt



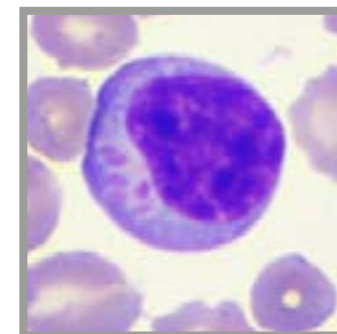
Kleiner, reifkerniger, reaktiver Lymphozyt



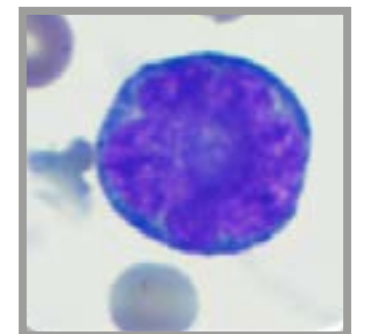
Große, atypisch-neoplastische Lymphozyten



Kleiner, reifkerniger Standard-Lymphozyt



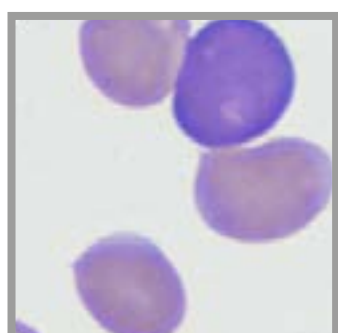
LGL Large granular lymphocyte



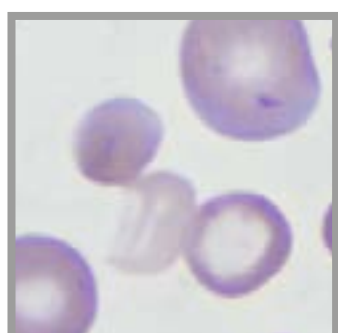
Mittelgroßer, dunkel-basophiler, atypisch-reaktiver Lymphozyt



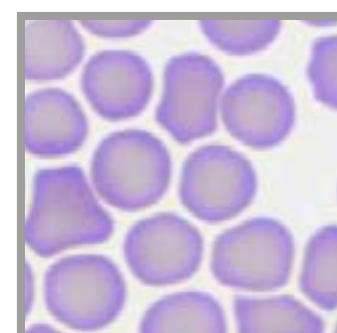
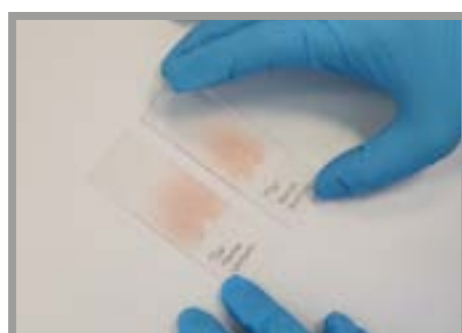
Physiologische Erythrozyten zentrale Aufhellung



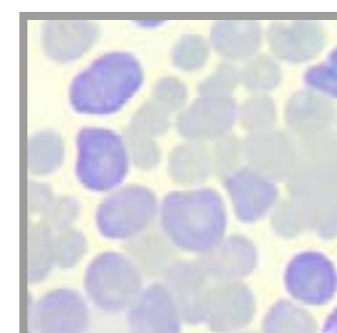
Polychromasie



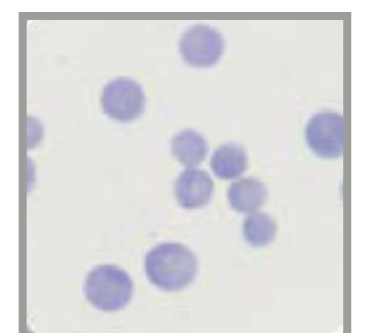
Anisozytose



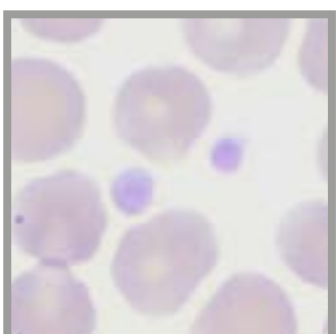
Physiologische Erythrozyten keine zentrale Aufhellung



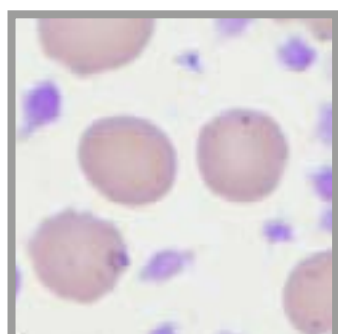
Polychromasie



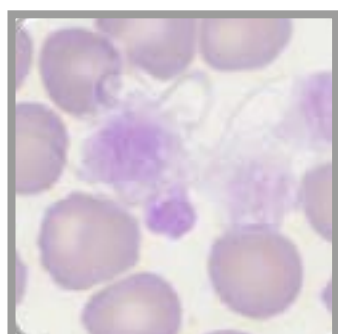
Anisozytose



Physiologische Thrombozyten



Thrombozytose

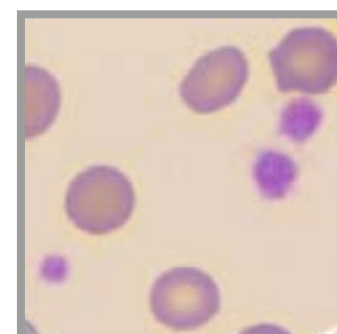


Makrothrombozyten

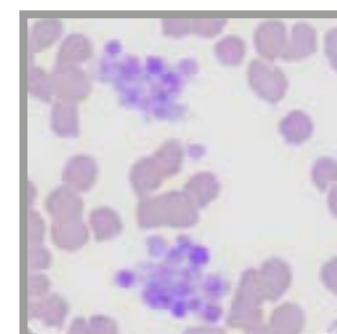


Blutausstrich

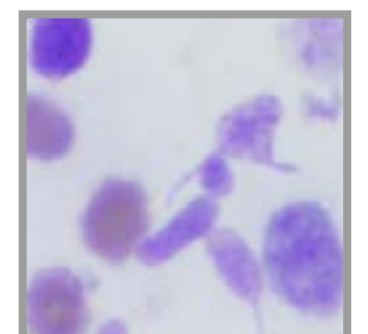
Färben



Physiologische Thrombozyten



Thrombozyten-aggregate



Atypische Thrombozyten

Stand: Juni 2024, Bildquelle: Laboklin

**D** Steubenstr. 4  
97688 Bad Kissingen  
Deutschland  
Telefon +49 971 7 20 20  
Fax +49 971 6 85 46  
E-Mail info@laboklin.com  
Internet www.laboklin.com

**A** Paul-Hahn-Str. 3 / D / 1  
4020 Linz  
Österreich  
Telefon +43 732 717 24 20  
Fax +43 732 717 322  
E-Mail labor.linz@laboklin.com  
Internet www.laboklin.com

**CH** Max Kämpf-Platz 1  
Postfach, 4002 Basel  
Schweiz  
Telefon +41 61 319 60 60  
Fax +41 61 319 60 65  
E-Mail labor.basel@laboklin.ch  
Internet www.laboklin.com