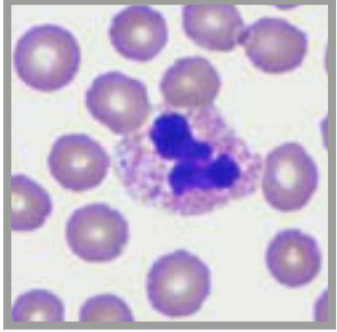
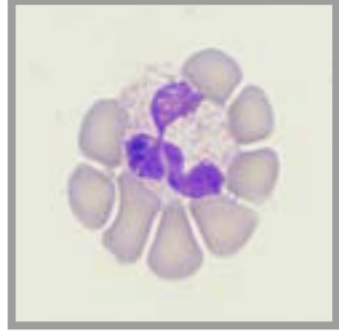


HÄMATOLOGIE

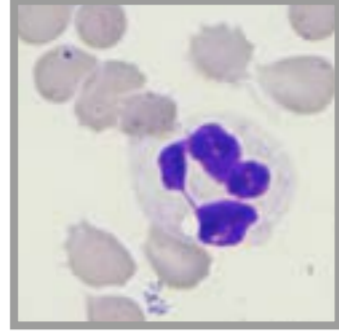
→ Kleinsäuger



Segmentkerniger heterophiler Granulozyt Kaninchen



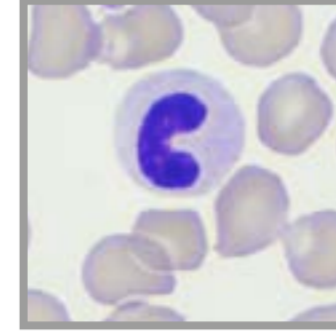
Segmentkerniger heterophiler Granulozyt Meerschweinchen



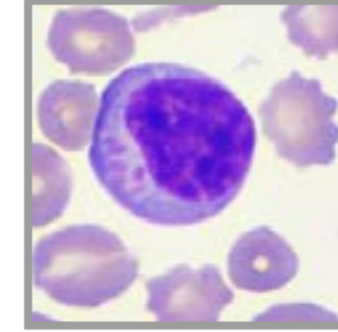
Segmentkerniger neutrophiler Granulozyt Frettchen



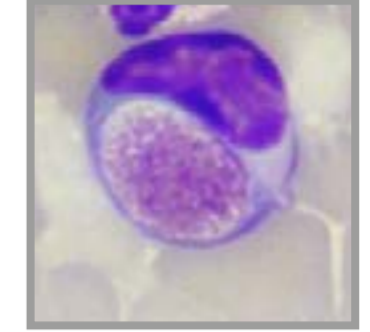
Punktionsstellen beim Meerschweinchen:
Li: V. saphena: Einstich lat. der Achillessehne (mittleres Drittel Unterschenkel) in einem Winkel < 45°
Re: V. cephalica antebrachii



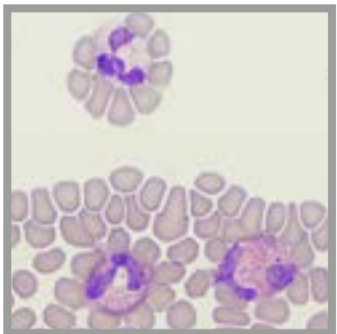
Stabkerniger neutrophiler Granulozyt Frettchen



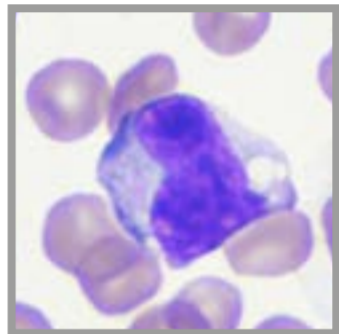
LGL
Large granular lymphocyte



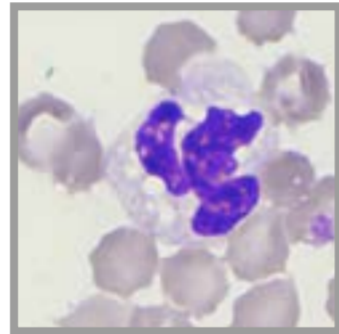
Foa-Kurloff-Zelle Meerschweinchen



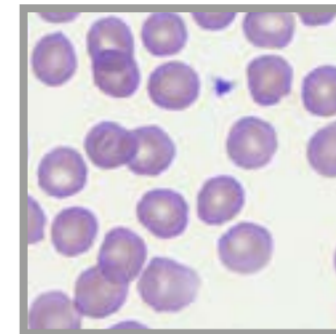
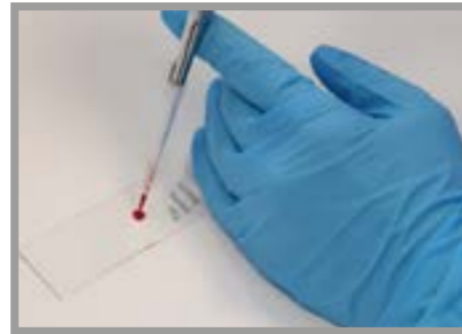
Heterophiler (o.), Eosinophile (u.) Meerschweinchen



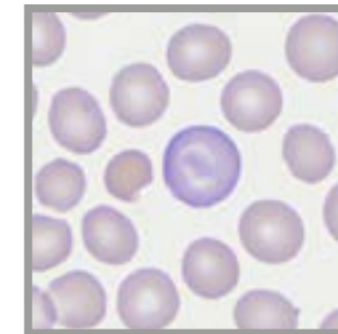
Aktivierter Monozyt Kaninchen



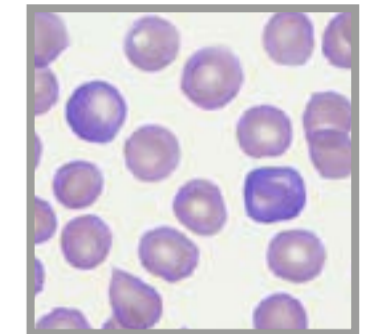
Aktivierter Monozyt Frettchen



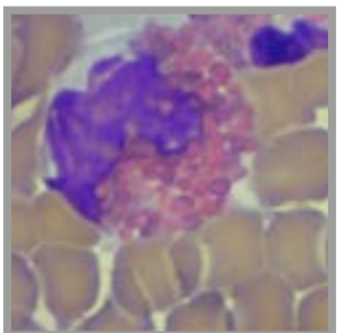
Physiologische Erythrozyten Kaninchen



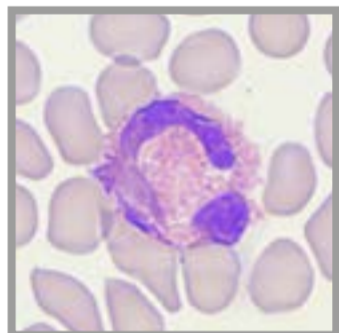
Anisozytose, Polychromasie Kaninchen



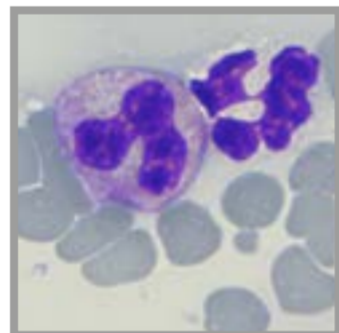
Polychromasie Kaninchen



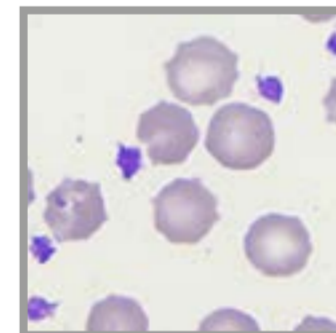
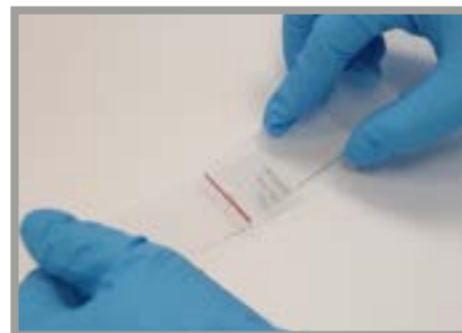
Eosinophiler Granulozyt Kaninchen



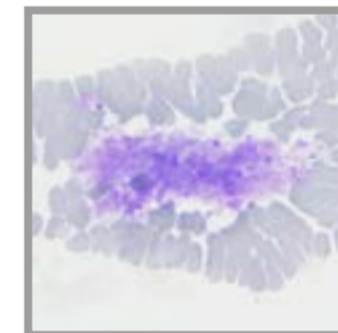
Eosinophiler Granulozyt Meerschweinchen



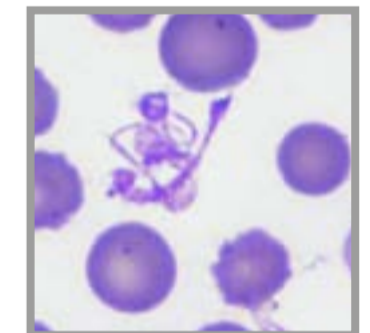
Eosinophiler Granulozyt Frettchen



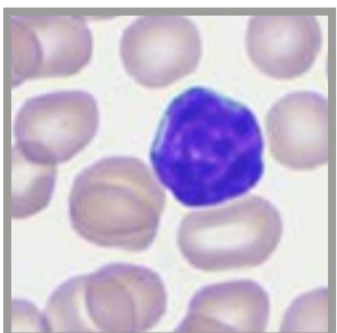
Thrombozyten Frettchen



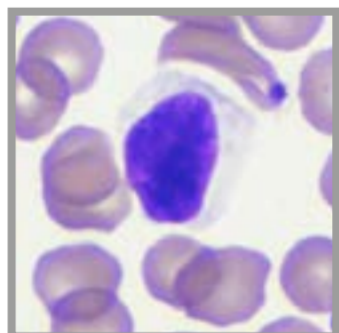
Thrombozytenaggregat Frettchen



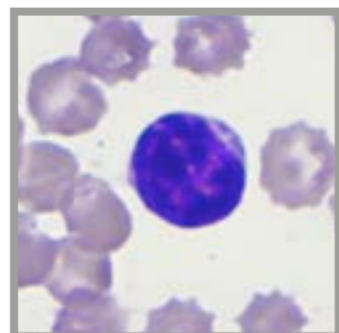
Atypische Thrombozyten Meerschweinchen



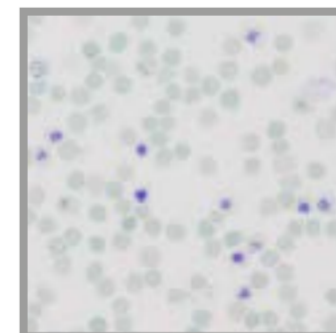
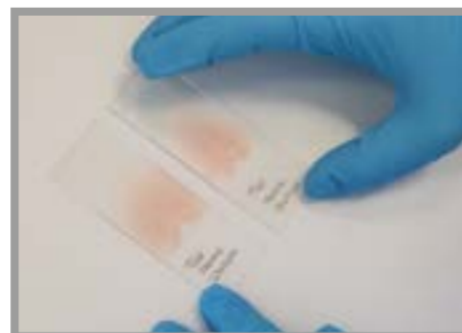
Kleiner reifkerniger Standard-Lymphozyt Meerschweinchen



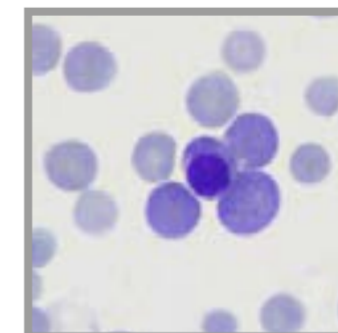
Kleiner reifkerniger reaktiver Lymphozyt Kaninchen



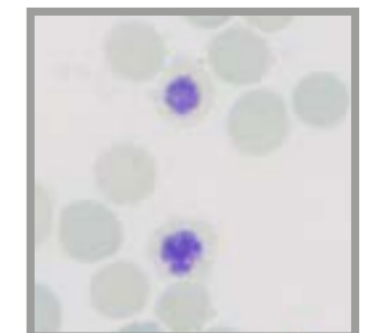
Standard-Lymphozyt Frettchen



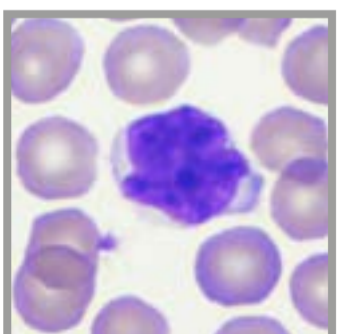
Retikulozyten Übersichtsbild Kaninchen



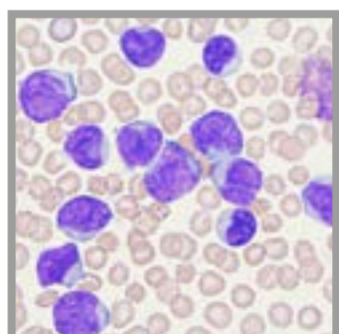
NRBC kernhaltige Erythrozytenvorläuferzelle Kaninchen



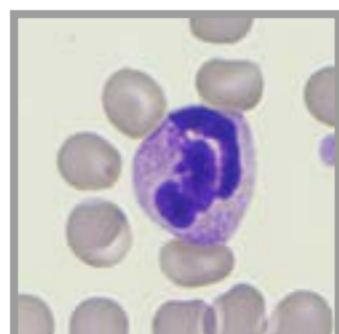
Retikulozyten Gruppe I Kaninchen



Gekerbter atypisch-reaktiver Lymphozyt Kaninchen



Lymphom Stadium V Große, atypisch neoplastische Lymphozyten Meerschweinchen

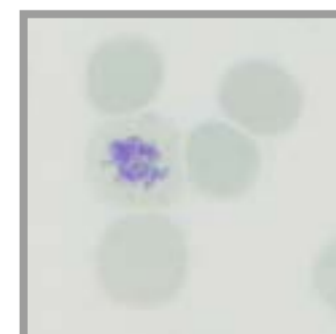


Basophiler Granulozyt Meerschweinchen



Blutausstrich

Färben



Retikulozyten Gruppe II Kaninchen



Retikulozyten Gruppe III Kaninchen



Retikulozyten Gruppe IV Kaninchen

Stand: Juni 2024, Bildquelle: Laboklin

D Steubenstr. 4
97688 Bad Kissingen
Deutschland
Telefon +49 971 7 20 20
Fax +49 971 6 85 46
E-Mail info@laboklin.com
Internet www.laboklin.com

A Paul-Hahn-Str. 3 / D / 1
4020 Linz
Österreich
Telefon +43 732 717 24 20
Fax +43 732 717 322
E-Mail labor.linz@laboklin.com
Internet www.laboklin.com

CH Max Kämpf-Platz 1
Postfach, 4002 Basel
Schweiz
Telefon +41 61 319 60 60
Fax +41 61 319 60 65
E-Mail labor.basel@laboklin.ch
Internet www.laboklin.com