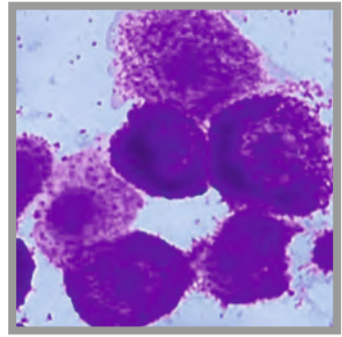
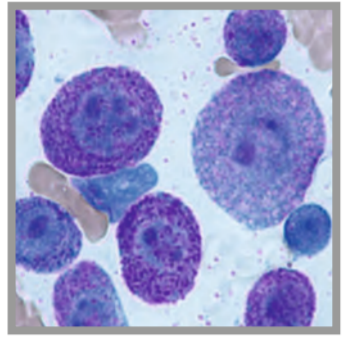


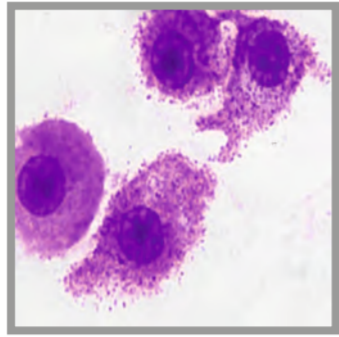
# ZYTOLOGIE



Mastzelltumor, gut differenziert, Hund

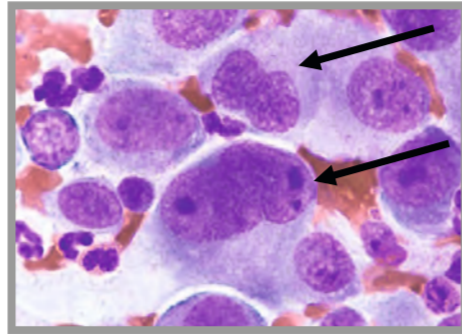


Mastzelltumor, schlecht differenziert, Hund

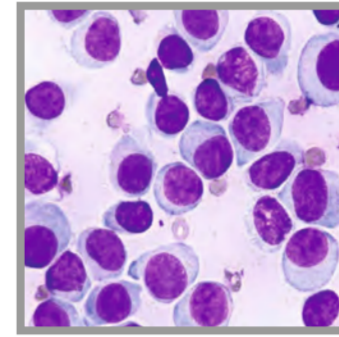


Mastzelltumor Katze

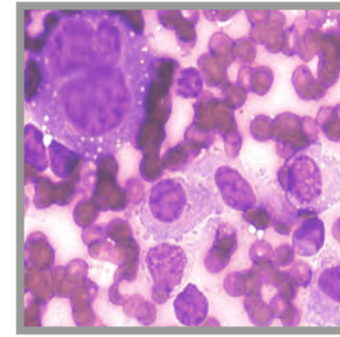
## Allgemeine Malignitätskriterien



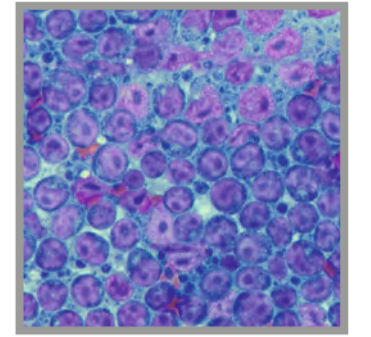
Mehrernigkeit (Pfeil), Anisozytose und Anisokaryose



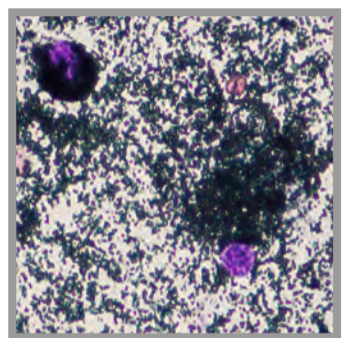
Histiozytom Hund



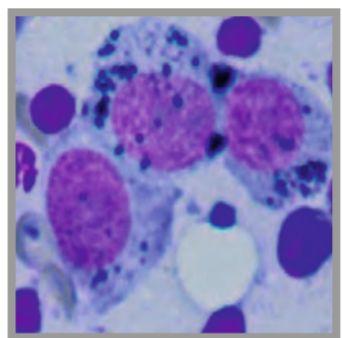
Histiocytares Sarkom Hund



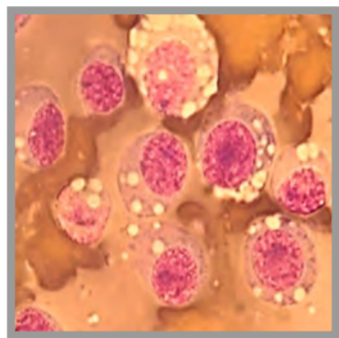
Lymphom Hund



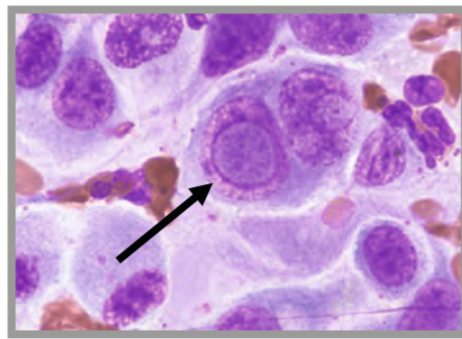
Melanozytom Hund



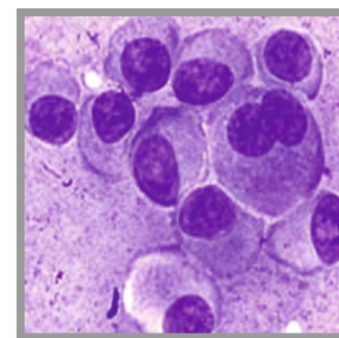
Malignes Melanom Hund



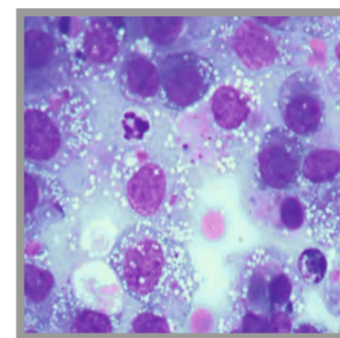
Stickersarkom Hund



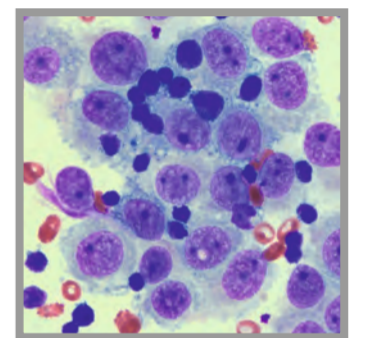
Prominente, atypische Nukleoli



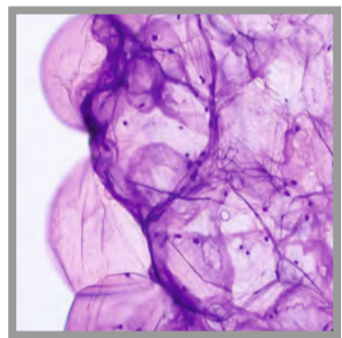
Plasmazelltumor Hund



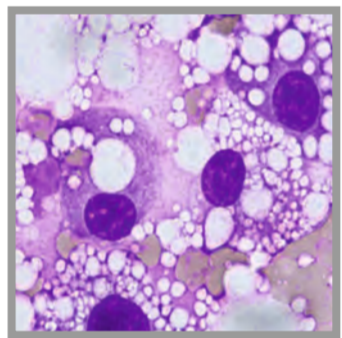
Chemodektom Katze



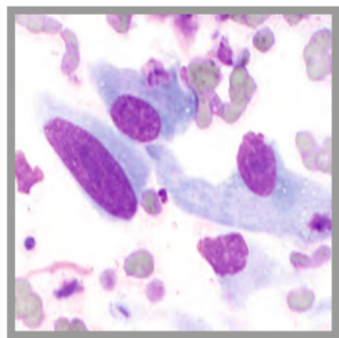
Thymom Hund



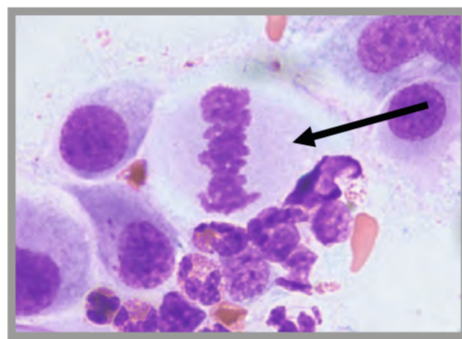
Lipom Hund



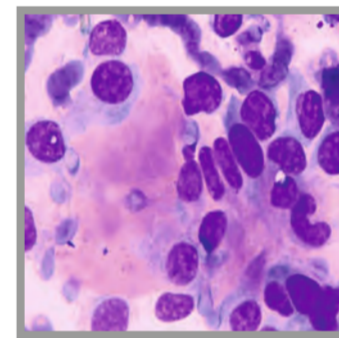
Liposarkom Hund



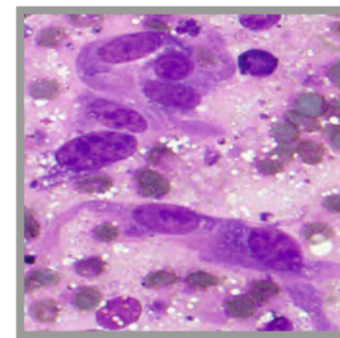
Fibrosarkom Katze



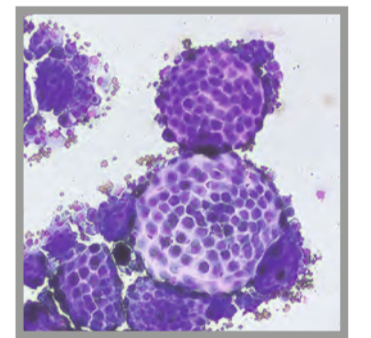
Mitosefigur



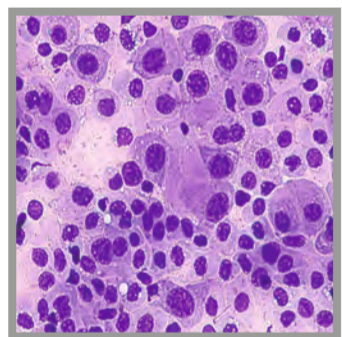
Osteosarkom Hund



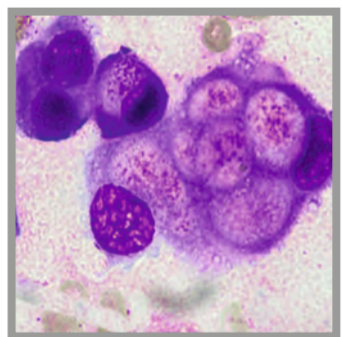
Hämangiosarkom Hund



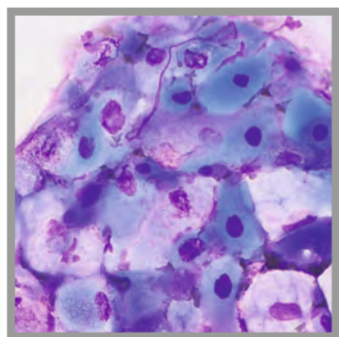
Mesotheliom Katze



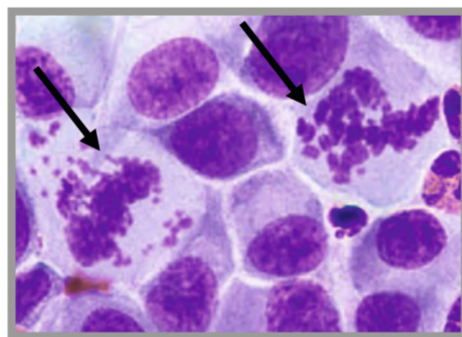
Urotheliales Karzinom Hund



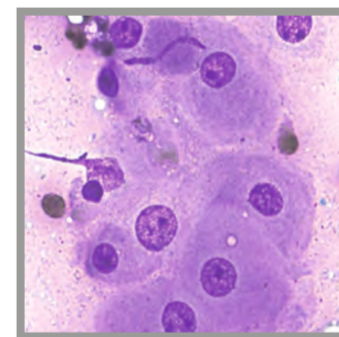
Prostatakarzinom Hund



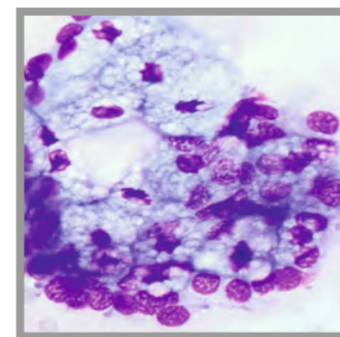
Platteneithelkarzinom Katze



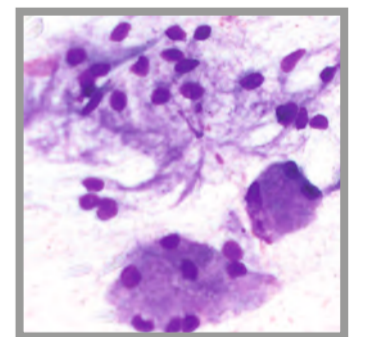
Atypische Mitosen



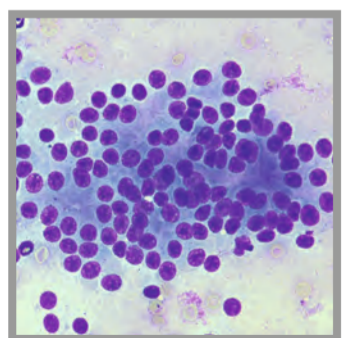
Adenom der hepatoiden Drüsen Hund



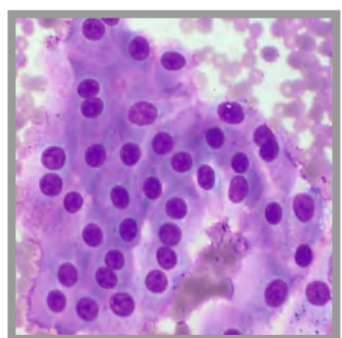
Talgdrüsenadenom Hund



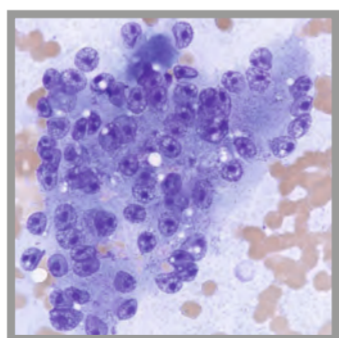
Speicheldrüse Hund



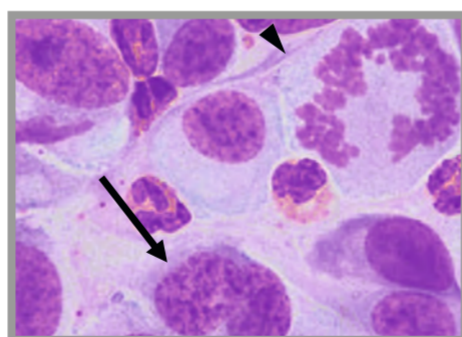
Analbeutelkarzinom Hund



Schilddrüsenkarzinom Hund



Leberkarzinom Hund



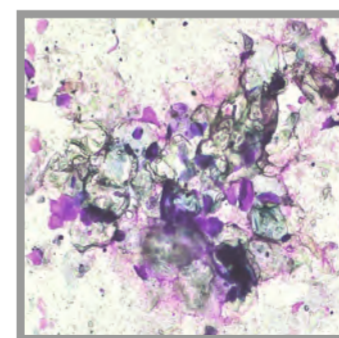
Anisozytose und Anisokaryose, Mitose (Pfeilkopf), Doppelkernigkeit (Pfeil)



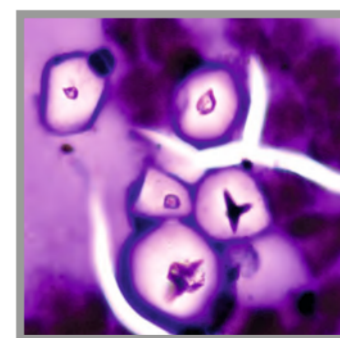
Poster Zytologie



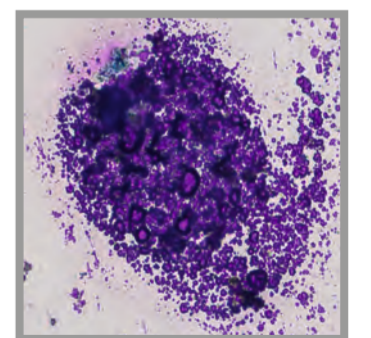
Poster Harnsediment



Haarfollikelzyste Hund



Talkum



Ultraschallgel

Stand: Juni 2024, Bildquelle: Laboklin

**D** Steubenstr. 4  
97688 Bad Kissingen  
Deutschland  
Telefon +49 971 7 20 20  
Fax +49 971 6 85 46  
E-Mail info@laboklin.com  
Internet www.laboklin.com

**A** Paul-Hahn-Str. 3 / D / 1  
4020 Linz  
Österreich  
Telefon +43 732 717 24 20  
Fax +43 732 717 322  
E-Mail labor.linz@laboklin.com  
Internet www.laboklin.com

**CH** Max Kämpf-Platz 1  
Postfach, 4002 Basel  
Schweiz  
Telefon +41 61 319 60 60  
Fax +41 61 319 60 65  
E-Mail labor.basel@laboklin.ch  
Internet www.laboklin.com